

CYCLONE MOCHA SNAPSHOT - MYANMAR CHILD PROTECTION AREA OF RESPONSIBILITIES

CHIN, KACHIN, MAGWAY, SAGAING, RAKHINE

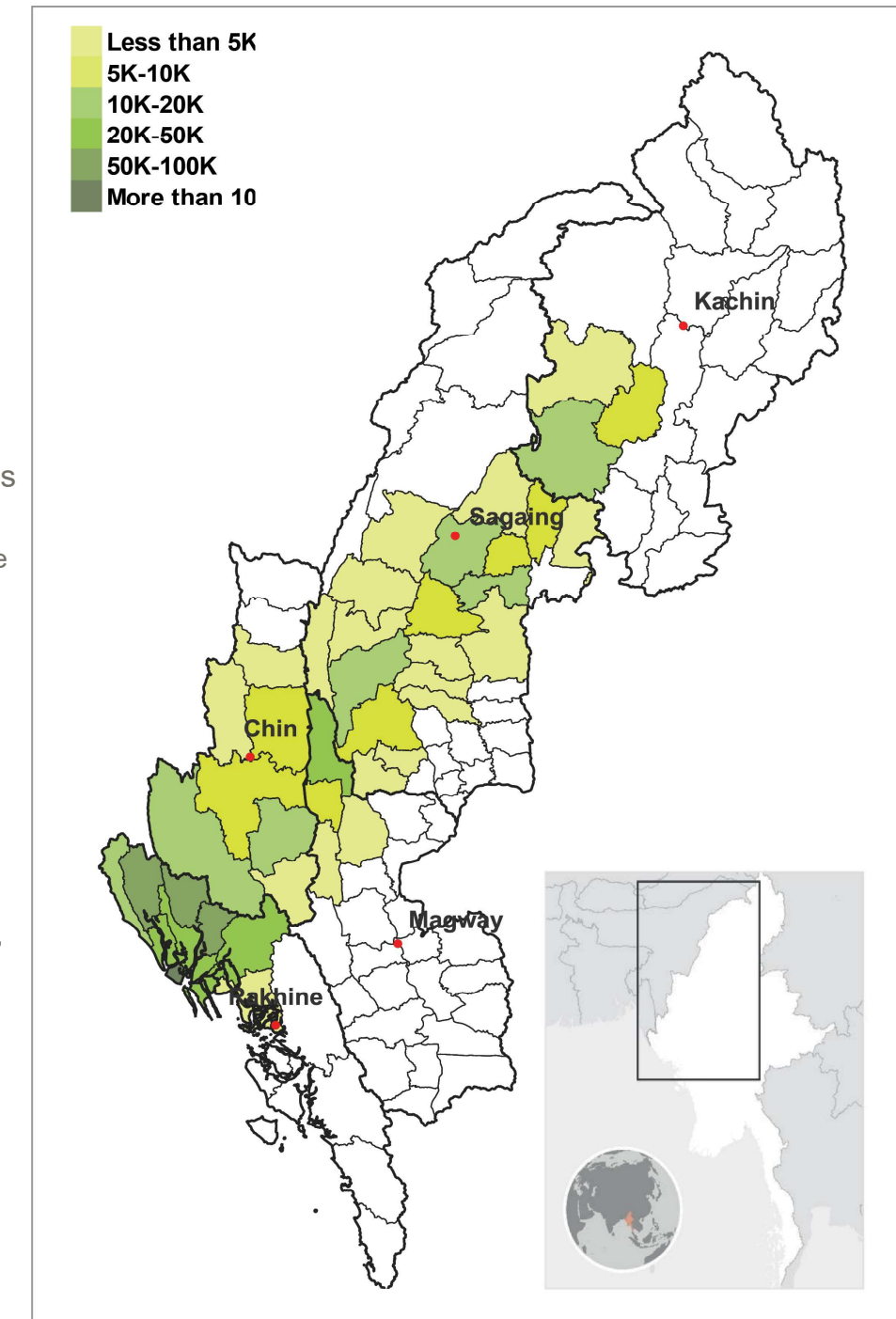
14 May - 19 June 2023



Overview

On 14 May 2023, Cyclone Mocha hit Myanmar, causing widespread destruction in many townships in Rakhine state alongside areas in Northwest, notably Sagaing, Magway and Chin, as well as some destruction in Kachin. Disrupted communication by the cyclone has meant that information as to impact on children is incomplete. The initial calculation by OCHA has projected 1.9M people will need humanitarian need in the worst-affected townships in Rakhine and Northwest and 35% of the total population are children aged 0-17 years old. As a direct result of the cyclone, child protection concerns are invariably exacerbated with some new child protection concerns being created. The concerns will continue to rise due to prolonged crowded living conditions, anxiety, lack of resources including food leading to negative coping mechanisms affecting children. CP AoR partners are in need of support with both access and funding to reach the most vulnerable children in the aftermath of the cyclone. Currently, CP AoR partners are working to provide a coordinated response in affected areas in Rakhine, Northwest and parts of Kachin.

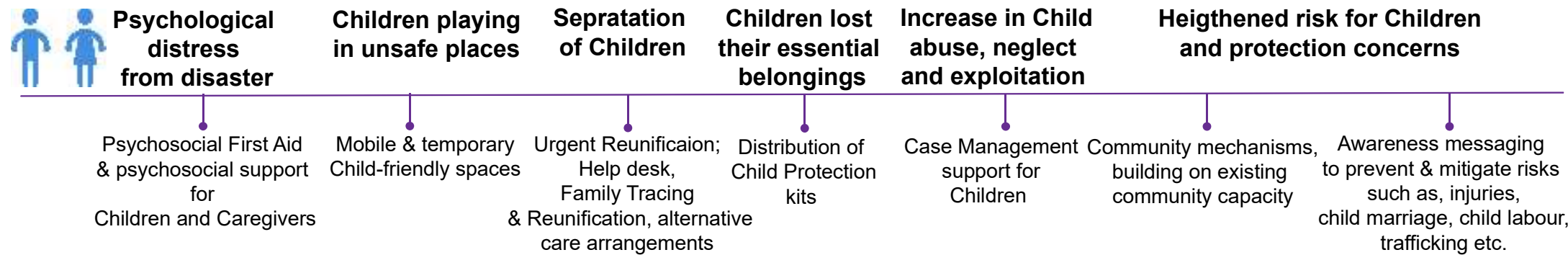
People targeted for Cyclone Mocha response by CP AoR



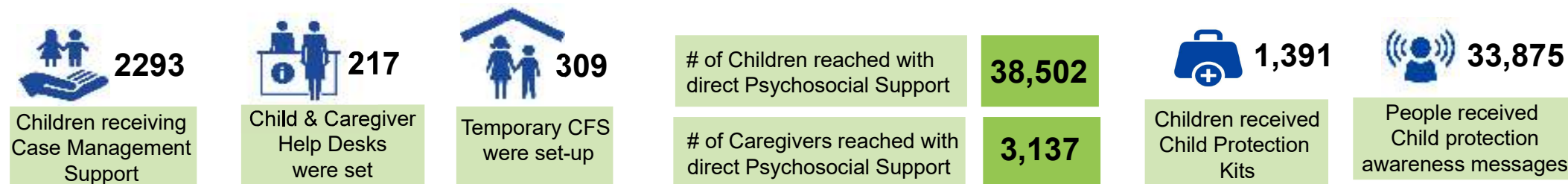
Key Figures - CP AoR PiN and Targets in Flash Appeal



Needs and Required Actions



Response and Beneficiaries*



*The response figures are based on partners reporting which may subject to underreporting due to the communication challenges faced by the partners, new reaches will be incorporated upon receiving additional reports.